

# Hamnguiden 8 Arholma – Landsort Utgåva 2

Hydrographica Harbour Chartlets 2016 – 2017/2

Corrections and notices for the period 2016-01-01 to 2017-04-03

Harbour no 274 Utö Gruvbryggan norra delen: Correction 1

Harbour no 212 Söderö Mjölkvallarna: Correction 2

Harbour no 210 Långviksskär\_Fällsingskobbarna: Correction 3

Harbour no 173 Sandhamn: Correction 4

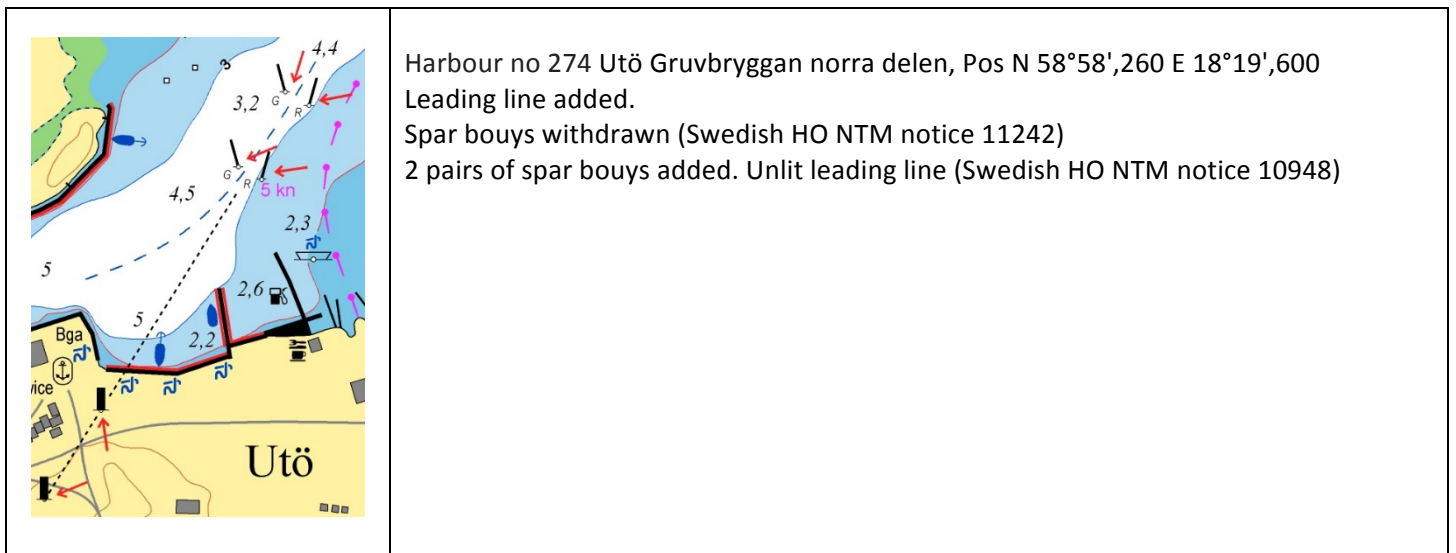
Harbour no 121 Möja\_Långvik: Correction 5

Harbour no 36 Svartlöga: Correction 6

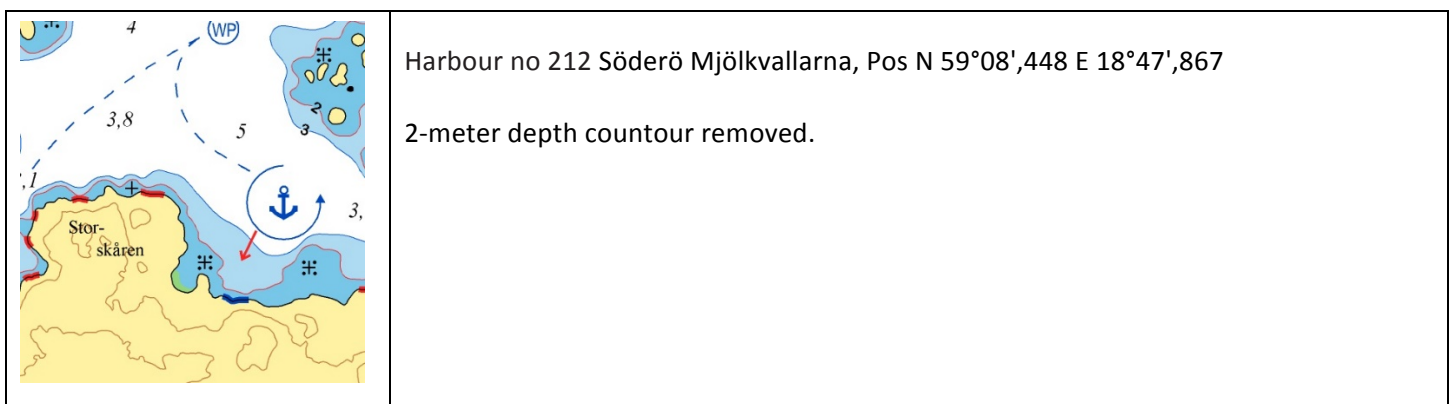
Harbour no 23 Söderarm\_Inra\_Hamnskär: Correction 7

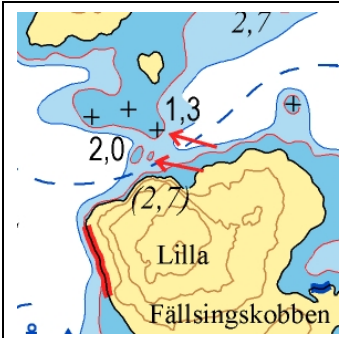
Harbour no 251 Ornö\_Varnöfladen : Correction 8 (added 2017-04-03)

## Correction 1



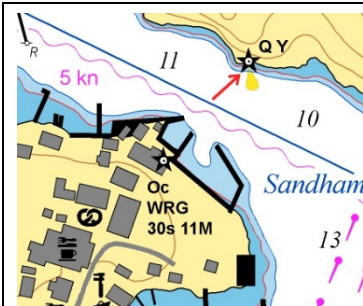
## Correction 2



**Correction 3**

Harbour no 210 Långviksskär\_Fällingskobbarne, Pos N 59°09',341 E 18°48',565

Underwater rock (1,3) added. 2-meter depth contours adjusted

**Correction 4**

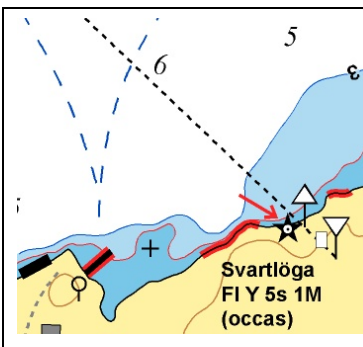
Harbour no 173 Sandhamn, Pos N 59°17',424 E 18°54',948

Light added (Swedish HO NTM notice 11756)

**Correction 5**

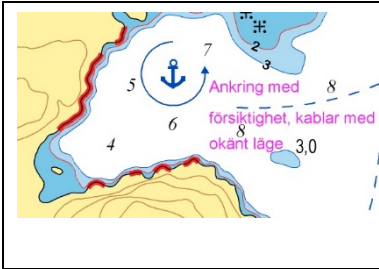
Harbour no 121 Möja\_Långvik, Pos N 59°26',579 E 18°55',249

Underwater rock added, 2-meter depth contour adjusted.

**Correction 6**

Harbour no 36 Svartlöga, Pos N 59°34',816 E 19°04',133

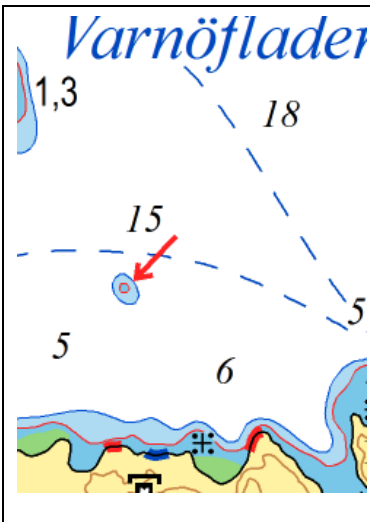
Light Svartlöga added (Swedish HO NTM notice 11758)

**Correction 7**

Harbour no 23 Söderarm\_Inra\_Hamnskär, Pos N 59°43',886 E 19°19',374

Text: "Ankring med försiktighet, kablar med okänt läge." added.

English translation : "Anchoring with caution, cables with unknown position"

**Correction 8**

Harbour no 23 Ornö\_Varnöfladen, Pos N 59° 0',689 E 18°23',413

A shallow area is added with 2- and 3-meter contour.